

E. coli O157-F "SEIKEN"

PRINCIPLE

A rapid slide latex reagent which uses latex particles sensitized with a highly specific monoclonal antibody to the O157 LPS antigen for the presumptive identification of *E. coli* O157

FEATURES

1. Simple test procedure and easy to interpret results
2. High specificity and sensitivity, detecting *E. coli* O157 even at ratios of 1:100 contaminating bacteria
3. Both colony sweeping and individual colony testing possible

PROCEDURES

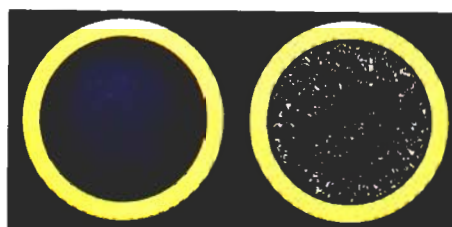
Food sample

↓
Enrichment culture

↓ ↓
Concentration by magnetic beads

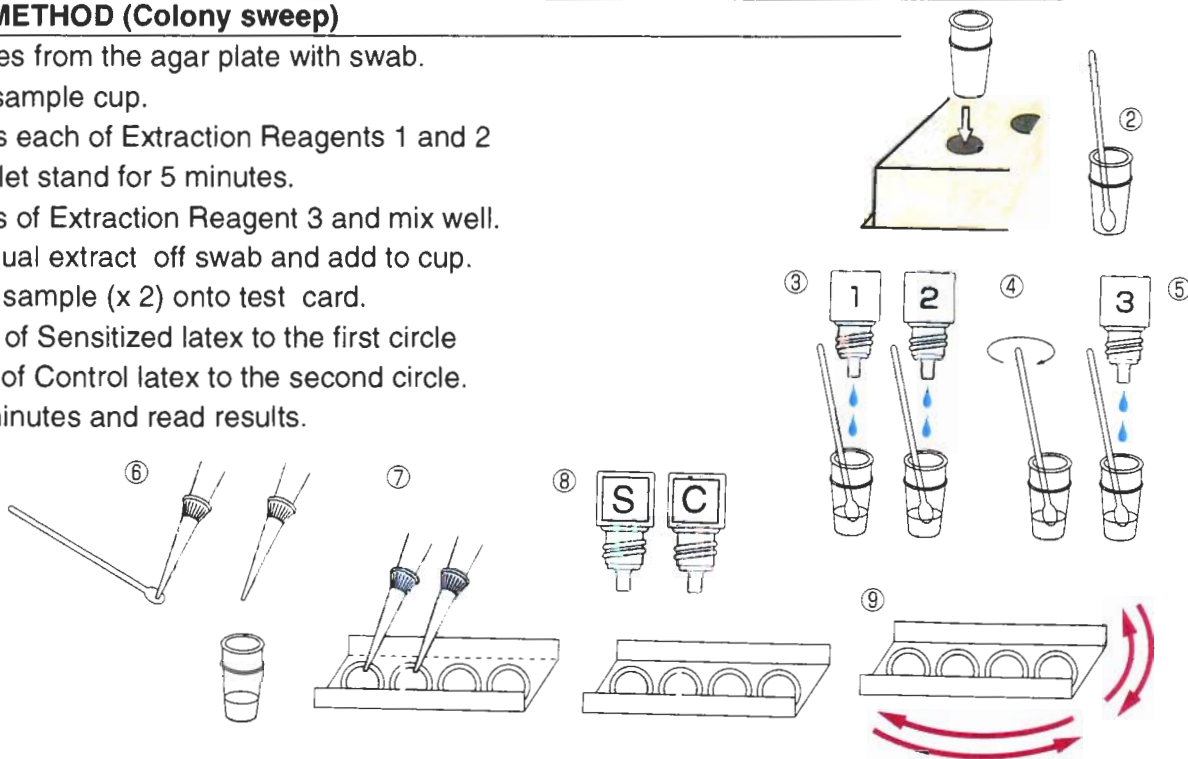
↓
Growth on TC-SMAC

↓
Slide Agglutination Test



EXTRACTION METHOD (Colony sweep)

1. Sweep colonies from the agar plate with swab.
2. Place into a sample cup.
3. Add two drops each of Extraction Reagents 1 and 2
4. Mix well and let stand for 5 minutes.
5. Add two drops of Extraction Reagent 3 and mix well.
6. Remove residual extract off swab and add to cup.
7. Add 25 uL of sample (x 2) onto test card.
8. Add one drop of Sensitized latex to the first circle and one drop of Control latex to the second circle.
9. Mix for two minutes and read results.



DIRECT METHOD (Individual colonies)

1. Add one drop of Sensitized latex in the first circle and Control latex in the second circle.
2. Take up a suspect colony and resuspend in latex reagents.
3. Mix for two minutes and read the results.

