

E. coli O157-AD "SEIKEN"

PRINCIPLE

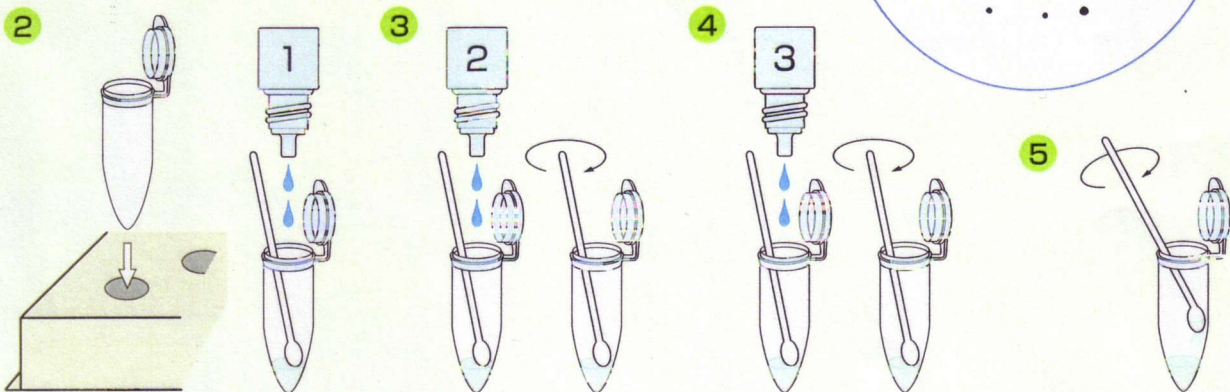
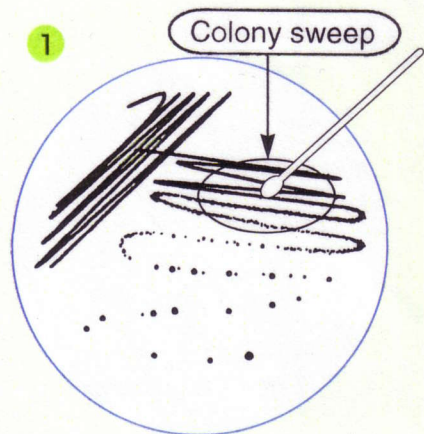
A rapid slide latex reagent which uses latex particles sensitized with a highly specific monoclonal antibody to the O157 LPS antigen for the presumptive identification of *E. coli* O157.

FEATURES

1. Simple test procedure and easy to interpret results
2. High sensitivity and specificity by colony sweep method off MacConkey, SMAC agar, etc.
3. Reduced risk of laboratory infection

EXTRACTION METHOD

1. Sweep colonies from the agar plate with swab.
2. Place into a microcentrifuge tube and add 2 drops of Extraction Reagent 1
3. Add 2 drops of Extraction Reagent 2
4. Mix well and let stand for 5 minutes and then add 2 drops of Extraction reagent 3
5. Remove residual extract off swab and add to cup



LATEX AGGLUTINATION

1. Add 25 μ L of sample to each of two circles onto slide test card
2. Add one drop of Sensitized latex to the first circle and one drop of Control latex to the second circle
3. Mix for two minutes and read results

